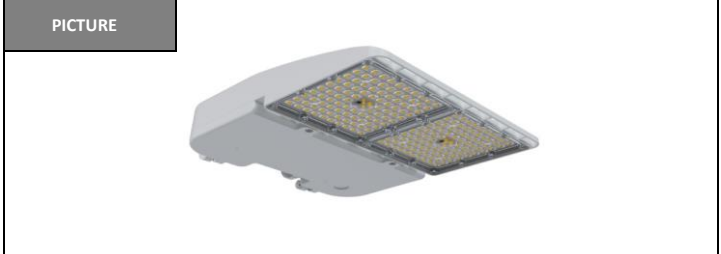


Version	2.0	Date	8/17/23
Prepared By	JC		

PRODUCT SPECIFICATION	
Category	Slim Area Light
Item Number	7652
Stock Code	FXSAL150SW/830/WH/T3
Mounting	Pole Mount/ Slip Fitter/ Yoke Mount/ Wall Mount
Housing Color	White (RAL#9003)



ELECTRICAL CHARACTERISTICS			
Rated Wattage (W)	90 / 120 / 150	Replacement Wattage (W)	400-575
Tested Wattage (W)	-		
Input Voltage (V)	120-277V	Surge Protect Level	10KV
Voltage Frequency (Hz)	50/60	Dimmable	0-10V
Input Current (A)	1.36	AUX (12V) Line	Yes
Power Factor	>0.9		
THD	<20%		

PHOTOMETRIC CHARACTERISTICS			
Lumen (lm)	12,649 16,800 21,163	CCT (K)	3000K
Efficacy (lm/w)	141	Beam Angle (°)	Type 3
CRI	>80		

GENERAL CHARACTERISTICS	
Operating Temperature (°F)	-40°F ~ 122°
Storage Temperature (°F)	-40°F ~ 140°F
IP Rating	IP66
IK Rating	IK08
Rated Life (Hrs)	50,000
Warranty (Yrs)	7

ACCESSORIES		
Item #	Stock Code	Description
P10371	SEN-BRI619	PIR Motion/Photocell 0-10V Internal 12V Low Voltage for 347/480V
P10316	SEN-BRI-RC100	Remote Programmer for P10371
K141030	REC3PLK/PHO	Twist-Lock Photocell and Receptacle Mount 120-277V 3 Prong

PRODUCT DIMENSIONS		
Width- in / (mm)	12.01" / 307	
Height- in / (mm)	2.60" / 66	
Depth- in / (mm)	14.20" / 360	
EPA (ft²)	0.212 ft² (@ 0 deg)	
Weight (lbs)	8	
Mounting Height (ft)	10~15	
Cable Length (ft)	1.64	

CERTIFICATIONS			
UL/ETL	ETL/cETL	CEC	
NSF/ETL Sanitation		JA8	
Energy Star		FCC	✓
DLC	5.1 Premium	RoHs	✓

DOCUMENTS			
LM79	✓	IES File	✓
LM80	✓	Dimmer List	

COMMENTS